



Website: clayhillparish.org.uk

Facebook: @clayhillparish

Twitter/X: @ClayHillParish

Telephone: 020 8363 6055

Email: mthr.mitzi@clayhillparish.org

# ST JOHN & ST LUKE



## CLAY HILL

**YOU ARE WELCOME**

**Sunday 7<sup>TH</sup> June 2026**

**Corpus Christi**

To donate

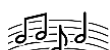


please scan

Please join us for tea or coffee after the service



### Today's Hymns



- Introit** One more step along the way (595)
- Gradual** Jesus calls us: o'er the tumult (379)
- Offertory** God forgave my sin (237)
- Communion** Make me a channel of peace (499)
- Final** To God be the glory! (777)
- Choir Anthem** Immortal love, forever full

### DATES FOR YOUR DIARY

- Sunday 21 June** Parish Confirmations
- Saturday 27 June** St John's Flower Festival
- Sunday 28 June** St John's Patronal
- Monday 14 August** Children's Storyteller
- Monday 14 August** Family Picnic
- Monday 21 August** Children's Craft Morning

### SERVICE TIMES THIS WEEK

<b>Sunday 7 June</b>	St Luke's Church	<b>9.00am</b> Bubble Church
	St Luke's Church	<b>10.00am</b> Parish Eucharist with 12 <sup>th</sup> Enfield Scouts
	St Mary Magdalene	<b>5.00pm</b> Choral Evensong
<b>Tuesday 9 June</b>	St Luke's Lady Chapel	<b>8:00am</b> Morning Prayer
<b>Wednesday 10 June</b>	St Luke's Lady Chapel	<b>8:00am</b> Morning Prayer
	St Luke's Lady Chapel	<b>5.30pm</b> Evening Prayer
<b>Thursday 11 June</b>	St Luke's Lady Chapel	<b>8:00am</b> Morning Prayer
<b>Sunday 14 June</b>	St John's Church	<b>9.15am</b> Children's Church
	St John's Church	<b>10.00am</b> Parish Eucharist
<b>Trinity 2</b>	St John's Hall	<b>5.00pm</b> Evening Prayer with Informal Discussion

+++++

### ALPHA COURSE CONTINUES TOMORROW

Supper at **6.30pm** in **St Luke's Church**  
 Then a chance to explore the Christian Faith  
 This week we will be looking at  
*Why and How do I Pray?*

+++++

### PARISH CONFIRMATIONS 2026

Will be held at St Luke's  
 on **21 June at 10:00am**  
*The Bishop of Edmonton*  
*is our celebrant and preacher*

### Please Pray for Jack, Samantha and Paul

Any offers of help with celebratory food  
 and a cake please speak to Mthr Mitzi  
 +++++

### St John's Patronal 2026

**St John's Church is 169 years old this year!**  
**Saturday 27<sup>th</sup> June is our annual Flower Festival**  
**10.30am – 4.00pm**

The theme is the World Cup  
 Come along to celebrate with us and admire the  
 wonderful floral creations made by the many  
 groups associated with our parish.

**Refreshments served**  
**Raffle**

+++

**Sunday 28<sup>th</sup> June** our Patronal Festival Eucharist  
 will be to celebrate the Feast of the Birthday of  
 St John the Baptist

*St Luke's Church is open on Mondays 10am - noon*  
*St John's is open on Wednesdays 10am – noon*

### COMMUNITY AT CLAY HILL

- Mondays** Place of Welcome **10.00am - noon**  
*St Luke's*
- Weds** Gardening & Coffee **10.00am - noon**  
*St John's*
- Thursdays** Restorative Yoga **12.30pm**  
*St Luke's*
- Fridays** Clay Hill Singers **10.30am - noon**  
*St Luke's*

Please pray for the sick and all those who need our prayers. Please pray for the situation in the Middle East, Sudan, Ukraine, Yemen and all places of unrest. Please pray for people who are struggling with debt, food and fuel poverty and those coping with physical or mental ill health.